

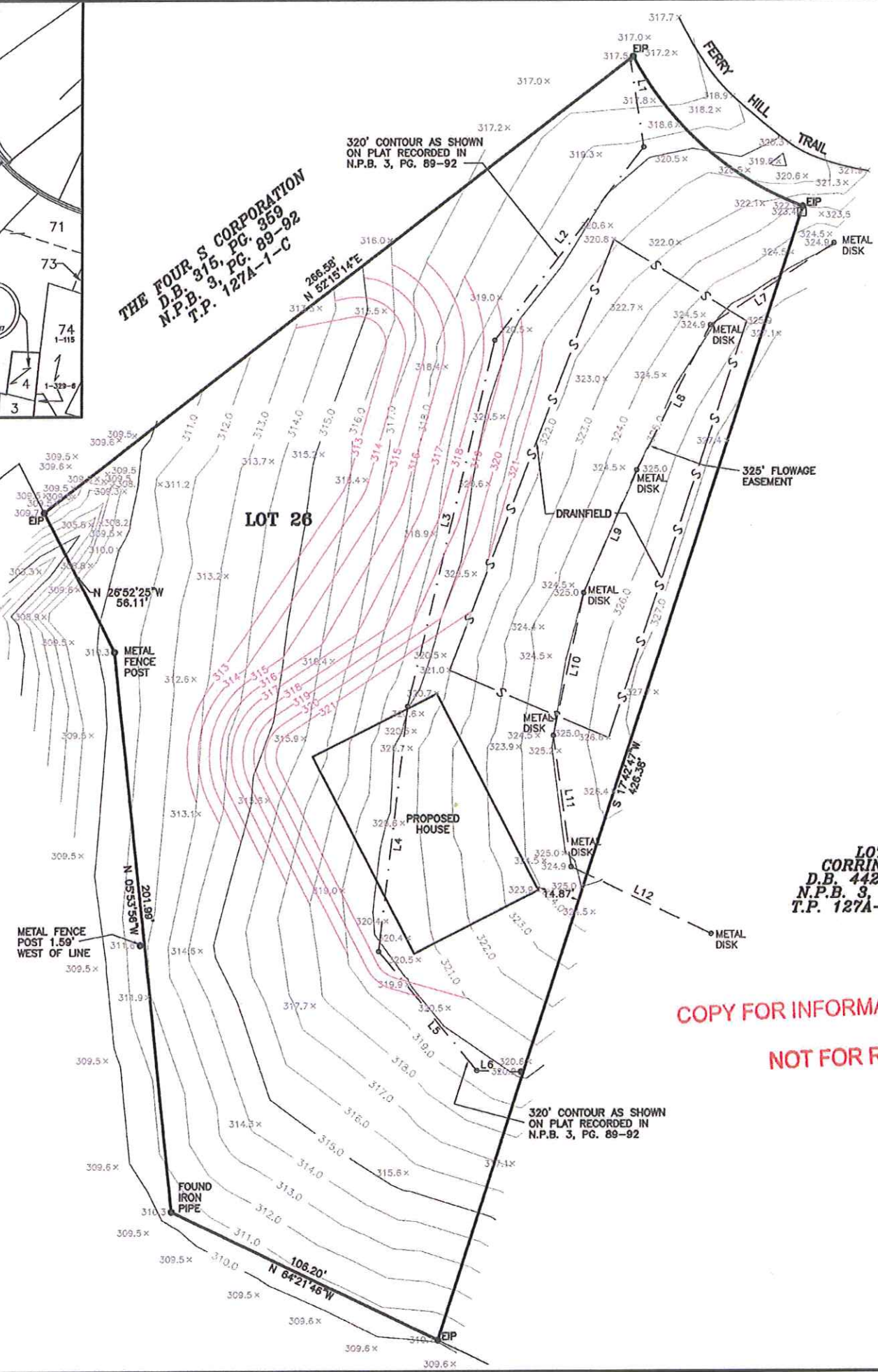
**THE FOUR S CORPORATION**  
 D.B. 315, PG. 359  
 N.P.B. 9, PG. 89-92  
 T.P. 127A-1-C

320' CONTOUR AS SHOWN  
 ON PLAT RECORDED IN  
 N.P.B. 3, PG. 89-92

**LOT 26**

**LOT 26  
 CORRINE J  
 D.B. 442, P  
 N.P.B. 3, PG.  
 T.P. 127A-1-**

**COPY FOR INFORMATION  
 NOT FOR RECORD**



320' CONTOUR AS SHOWN  
 ON PLAT RECORDED IN  
 N.P.B. 3, PG. 89-92