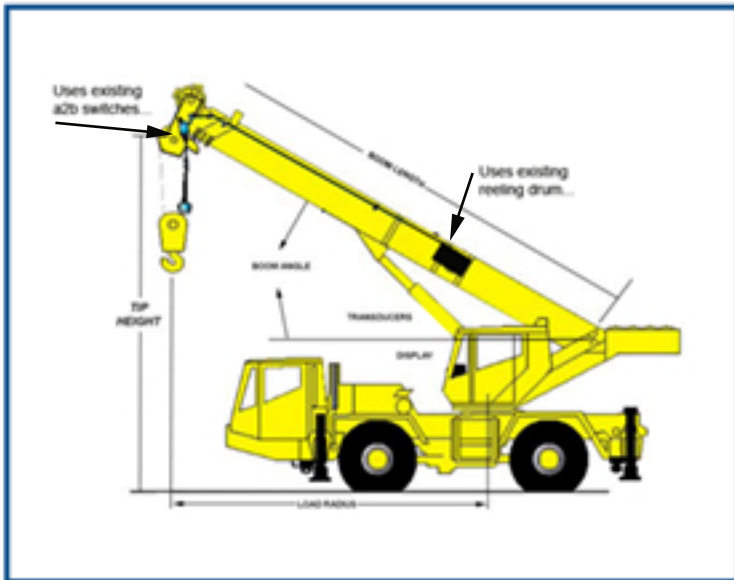


## MARK 4E / 2 UPGRADE FOR ALL MICROGUARD SYSTEMS



### Improves Efficiency and Productivity

**Quick & Easy Calibration** - Exclusive AccuCal calibration procedure done through the operator's console.

**Measures True Load Moment** - By measuring true load moment, the iVISOR MK4E/2 senses boom dynamics, load swingout, wind loading, shock load, and effects of boom deflection.

**Self-Diagnostics** - Continuously monitors system and sensors. Error codes are displayed to help identify problems and minimize downtime.

**Control Lever Lockout** - When the LMI system senses an overload or an impending two-block condition, the iVISOR MK4E/2 provides a relay output which can be used to engage an optional lever lockout.

| Description           | iVISOR MK4E/2       |
|-----------------------|---------------------|
| Power Supply          | 12 Vdc (opt. 24Vdc) |
| Max Consumption       | < 500M A            |
| Analog Inputs         | 8                   |
| Digital Inputs        | 5                   |
| Digital Outputs       | 4                   |
| System Rated          | IP65                |
| Operating Temperature | -13°F to +158°F     |

Mark 4E/2 upgrade kit includes:

Console

Central Unit

Transducers

Software

All necessary interconnect cable

