

G2 Legend Moonroof Tilt Modification

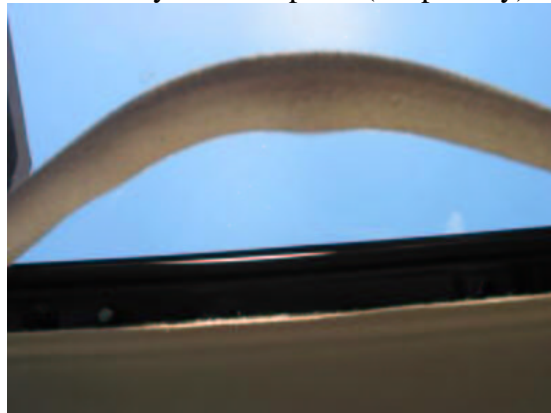
Step 1. Locate plastic tab on the underside trim of the moonroof (left and right side) and remove with small screwdriver.



Step 2. Remove screws using a Phillips screwdriver.



Step 3. Pull back and out of the way felt trim piece (coupe only)



Step 4. Un-screw four 10mm nuts (left and right side)



Step 5. Lift and remove moonroof out of the way
(note: at this point you may find shims on the assembly. To ensure the shims are placed back where they belong, I labeled each shim with a permanent marker. Based on where a shim is placed, I labeled each shim as follows:

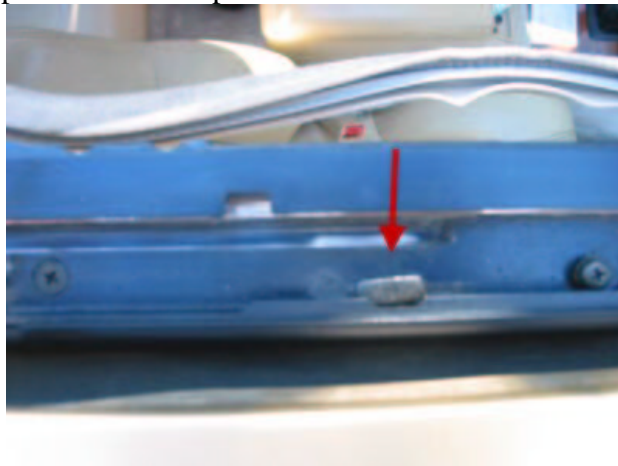
Drivers front side – LFT = Left Front Top

Drivers rear side – LRT = Left Rear Top

Passenger front side – RFT = Right Front Top

Passenger rear side – RRT = Right Rear Top

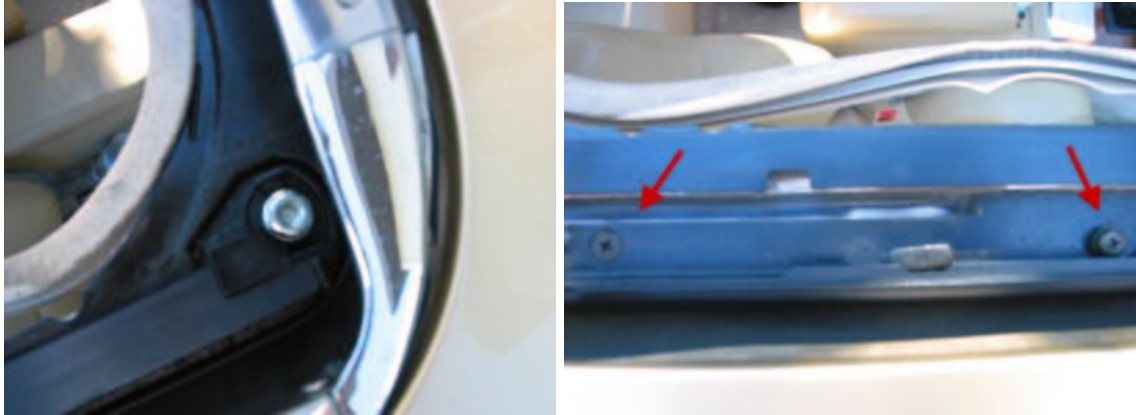
Step 6. Turn key to accessory and open the moonroof so that the moonroof glass bracket no longer rests on top of the slide stop.



Step 7.

Coupe:

Unscrew one 10mm nut and two screws.



Sedan:

Remove two 10 mm nuts and rail holder (for '91 - '93 Legends, remove the wind deflector).



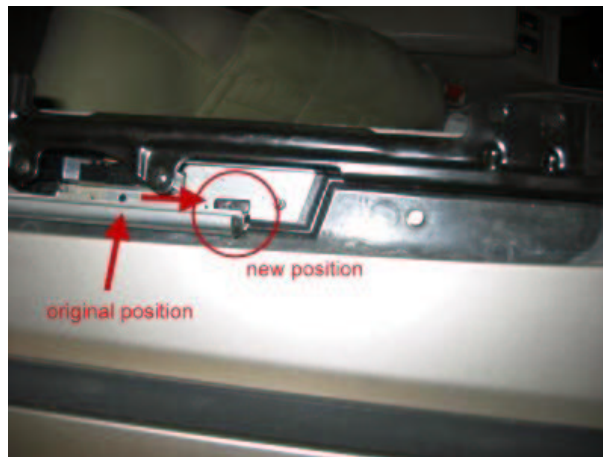
Remove drain channel from rear of moonroof opening.



Step 8. Locate stop and lift guide rail. Take your pliers and un-screw the screw that holds down the stop.



Note: On the coupe, simply remove the slide stop. On the sedan, move it to a forward position.



Step 9.

Coupe:

After the stop has been removed, be sure that the guide rail is in its place then take the 10mm nut and the two screws and screw them back in place. Be sure each screw is in its right place. (they are different screws). Follow this procedure on the other side.

Sedan:

Replace the rail holders and reinstall nuts to the guide rail (dark colored nut goes on the end of the guide rail). Reinstall drain channel. Be sure to install it such that it slides firmly back into position before screwing it back into the moonroof glass bracket.

Step 10. At this point, turn key to accessory and move the moonroof mechanism to its normally closed position.

Step 11. Place moonroof back in its place, before you screw back the 10mm nuts, lift the moonroof slightly and place shims back to its original place.

Step 12. Take the four 10mm nuts and re-secure them on each side.

Step 13. Put back felt trim in its place (if removed).

Step 14. Put the plastic piece back in its place and insert the screw and tighten (note the tab on the moonroof glass assembly onto which the trim piece slides). Then snap the small black piece to cover the screw. Follow this procedure on the other side.

Step 15. Enjoy your new tilt moonroof, and thanks for your support and patience.