

The Edmund Fowle House
Watertown, MA

Historic Interior Finishes: 1775

FIRST FLOOR

Room 105 Kitchen

floor dark charcoal gray SW 2848 Roycroft Pewter
baseboard none to sample
wainscot dark charcoal gray SW 2848 Roycroft Pewter
(light thin neutral gray primer)
wall pale cream (oil!) SW 6659 Captivating Cream
ceiling very light yellow SW 0051 Classic Ivory

Room 106 Office

floor dark charcoal gray SW 2848 Roycroft Pewter
baseboard lighter blue-gray SW 2850 Chelsea Gray
wall deep Prussian blue SW 6243 Distance
ceiling [SW 0051 Classic Ivory matte]
wood trim [SW 2850 Chelsea Gray semigloss or gloss]
door to 107 wood grained mahogany over light tan

Room 107 North Parlor

floor lighter gray SW 2850 Chelsea Gray
baseboard soft yellow-green HC 111 or California HCA Morning Dew
wall [not enough information yet]
fireplace, doors, cornice HC 111 or CA HCA Morning Dew
door and window trim

ceiling chalk white matte

Room 109 South Parlor

Colors based on scant evidence and on other colors in the House--
floor SW 2850 Chelsea Gray

baseboard B Moore HC-9 Charlestown Buff

all other wood trim HC-9 Charlestown Buff

wall [to be determined]

ceiling chalk white matte

Room 108 Foyer

floor: dark charcoal gray SW 2848 Roycroft Pewter
[next layer is Chrome Green!]

baseboard: light blue gray CA/HCA Vinal Haven
[next layer CA/HCA Wainscot Green]

dado: missing, but new evidence shows

wall: distemper Prussian Blue SW 6243 Distance

ceiling: off-white CA/HCA Jewett White

stair risers: dark charcoal gray SW 2848 Roycroft Pewter
stair treads: lighter gray SW 0055 Light French Gray

hand rail: red brown SW 2801 Rookwood Dark Red

SECOND FLOOR

Room 201 Council Chamber

floor: medium stone gray B Moore HC-167
baseboard: dark red brown, pigmented stain
wainscot: dark red brown, pigmented stain
wall: [neutral creamy off-white]
cornice: dark red brown, pigmented stain
ceiling: chalk white--oil paint (!)
window frames: dark red brown, pigmented stain
fireplace panels: oiled wood, medium ochre, verdigris glaze
door to hall: reddish brown stain

Room 202 Archival Storage

no samples reliable

Room 203 Southeast Chamber

floor: medium stone gray B Moore HC-167
baseboard: dark reddish brown pigmented stain
wall: to be determined
cornice: light blue gray CA/HCA Vinal Haven
ceiling: chalk white (3 layers!)
doors: light blue gray--possibly over red-brown stain

Room 204 Foyer

floor: dark charcoal gray SW 2848 Roycroft Pewter

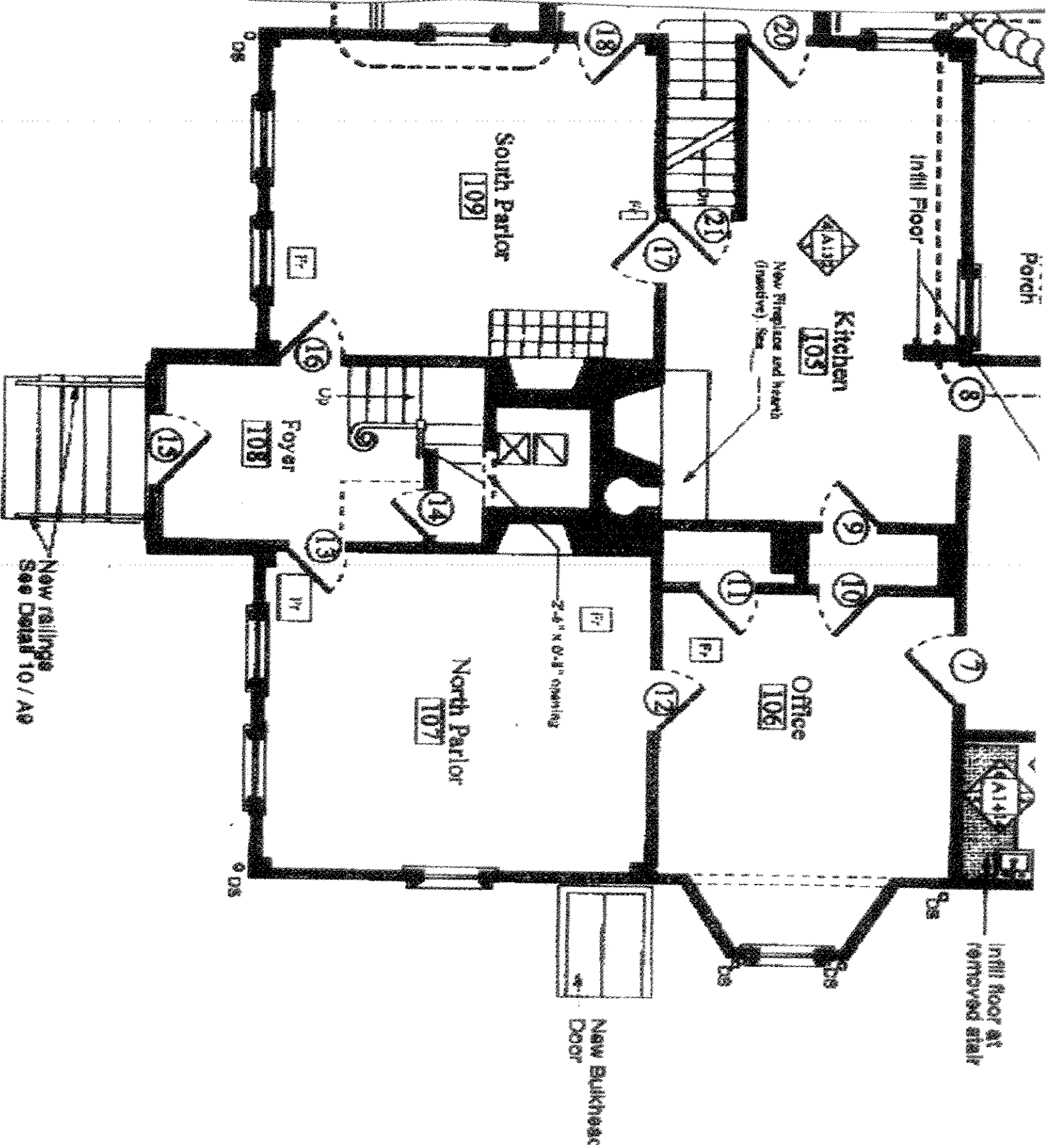
*Fowle House/Historic Paints
matched to commercial colors*

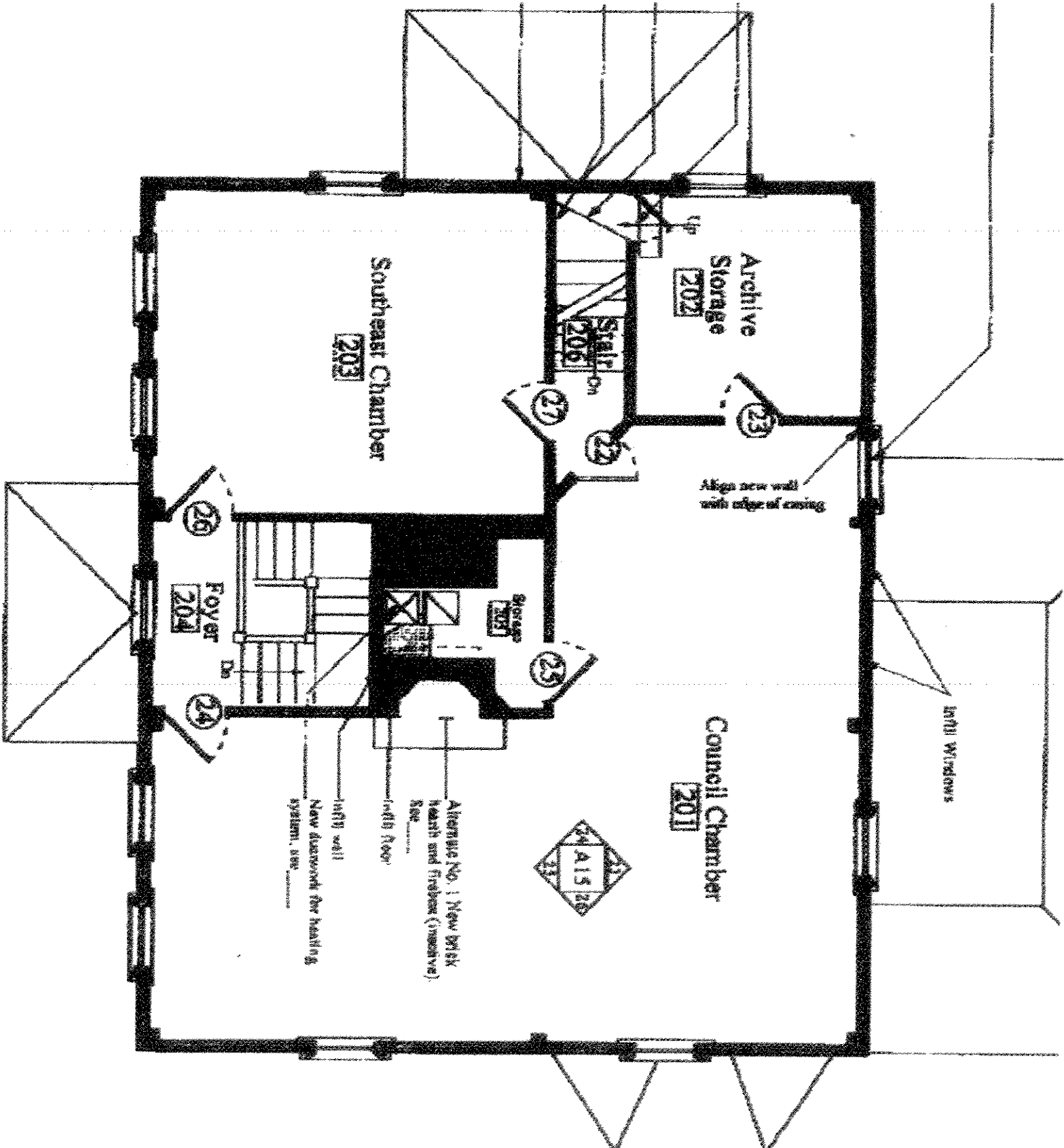
baseboard: red brown stain

wall: medium Prussian Blue, distemper SW 6243 Distance

window trim: red brown stain

ceiling: off-white CA/HCA Jewett White





Archive Storage
202

Southeast Chamber
203

Council Chamber
201

Foyer
204

Stair
206

Storage
205



Align new wall
with edge of casing

10'11" Windows

Alternate No. 1 New Disk
Heath and Fredson (massive)
See _____

with floor

10'11" wall

New doors for heating
system, see _____

26

24

25

22

27

23