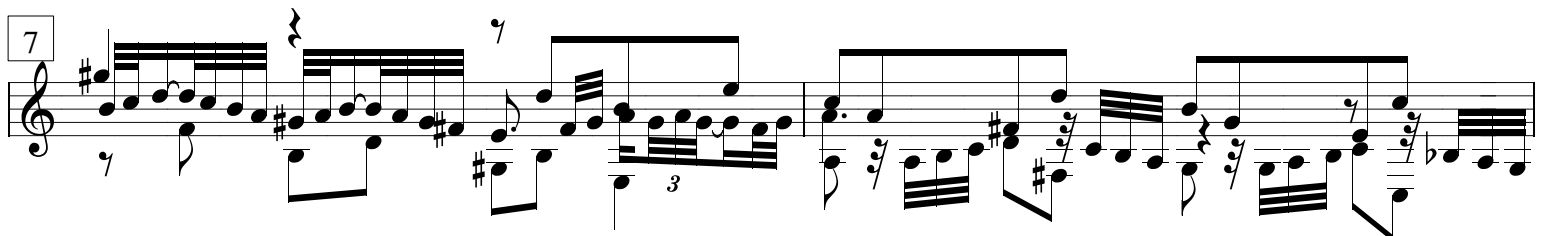
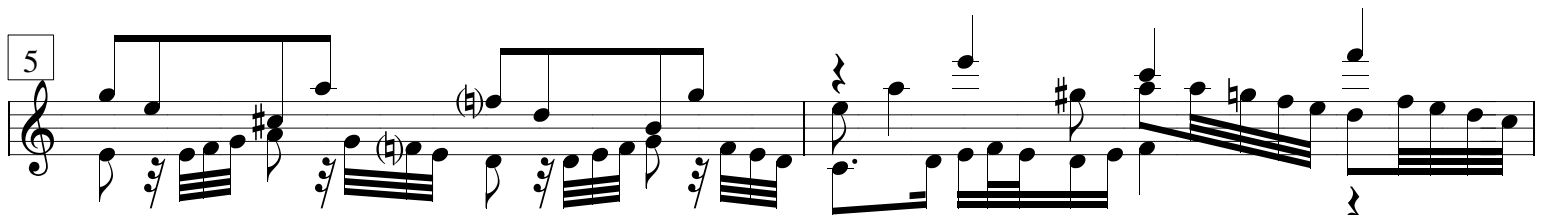
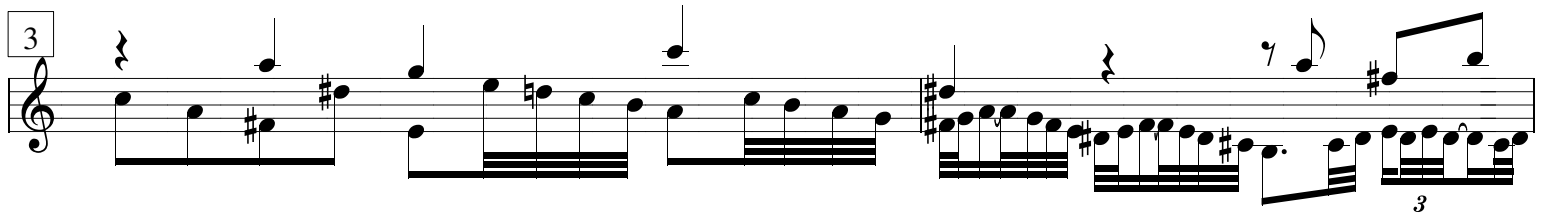


guitar transcription
prp 1986

Fugue

from the Well-Tempered Clavier
Book 2, Number 20

J. S. Bach



9

Musical notation for measures 9 and 10. Measure 9 features a treble clef with a melodic line of eighth notes and a bass line of quarter notes. Measure 10 continues the melodic line with a slur over the first half and a fermata over the second half, while the bass line remains quarter notes.

11

Musical notation for measures 11 and 12. Measure 11 includes a triplet of eighth notes in the treble and a quarter note in the bass. Measure 12 features a quarter note in the treble and a triplet of eighth notes in the bass.

13

Musical notation for measures 13 and 14. Measure 13 has a treble line with eighth notes and a bass line with quarter notes. Measure 14 continues with eighth notes in the treble and quarter notes in the bass, including a triplet of eighth notes at the end.

15

Musical notation for measures 15 and 16. Measure 15 shows a treble line with quarter notes and a bass line with eighth notes. Measure 16 features a treble line with eighth notes and a bass line with quarter notes.

17

Musical notation for measures 17 and 18. Measure 17 has a treble line with quarter notes and a bass line with eighth notes. Measure 18 continues with quarter notes in the treble and eighth notes in the bass, ending with a triplet of eighth notes.

19

Musical notation for measures 19 and 20. Measure 19 contains a treble clef, a key signature of one sharp (F#), and a 2/4 time signature. The melody consists of eighth-note runs. Measure 20 features a triplet of eighth notes in the right hand and a triplet of eighth notes in the left hand.

21

Musical notation for measures 21 and 22. Measure 21 includes a triplet of eighth notes in the left hand and a quarter note in the right hand. Measure 22 features a triplet of eighth notes in the left hand and a quarter note in the right hand.

23

Musical notation for measures 23 and 24. Measure 23 shows a treble clef, a key signature of one sharp (F#), and a 2/4 time signature. The melody consists of eighth-note runs. Measure 24 features a triplet of eighth notes in the left hand and a quarter note in the right hand.

25

Musical notation for measures 25 and 26. Measure 25 includes a treble clef, a key signature of one sharp (F#), and a 2/4 time signature. The melody consists of eighth-note runs. Measure 26 features a triplet of eighth notes in the left hand and a quarter note in the right hand.

27

Musical notation for measures 27 and 28. Measure 27 includes a treble clef, a key signature of one sharp (F#), and a 2/4 time signature. The melody consists of eighth-note runs. Measure 28 features a triplet of eighth notes in the left hand and a quarter note in the right hand.