

Whatcom County Scholastic Chess Championships

January 10, 2009

Northwest Washington Fairgrounds, Lynden

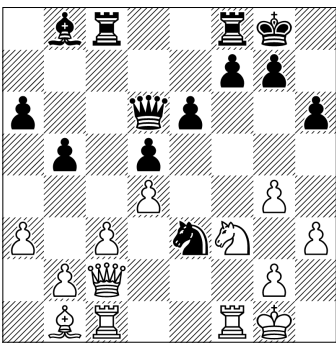
Sponsored by the Theresa Tromp Chess Trust. Established by the late Mrs. G. A. Lonnquist (the former Theresa Tromp, of Lynden) to develop thinking skills among youth.

State Qualifier Tournament!

Elementary players with winning scores qualify to participate in the State Elementary Chess Championships.

Further information on this and other upcoming area tournaments can be viewed on the Northwest Washington Scholastic Chess web site at <http://mysite.verizon.net/kaech/>. Contact Assistant TD Randy Kaech, kaech@verizon.net 384-2792, or Tournament Director Theodore Neff, tct@live.com 354-8256.

White to checkmate!



A chess tournament for chess players of all abilities, from beginner to experienced tournament competitor, from Kindergarten through 12th grade. Open to students residing in or attending school in Whatcom County.

FOUR PLAYING SECTIONS

K-2 (Primary), 3-5 (Elementary), 6-8 (Middle), 9-12 (High School).
Five round Swiss (no elimination). Game/30 (maximum one hour for each game.)
Tournament is rated by the Northwest Scholastic Rating System. Pairings by computer. 6th grade & above, bring a pencil!

SCHEDULE

Check-in 8:30 - 9:00 AM. Opening ceremonies at 9:05 AM. Approximate start times for each round: 9:40, 11:00, 12:30, 1:50, 3:10. Awards ceremony 4:30 PM.

AWARDS

Trophies for top five in K-2, 6-8, 9-12 sections, top seven in 3-5 section. Top teams awarded trophies (based on top four players from a school) in each section. Teams shall consist of students enrolled in a school for the 2008-09 school year.

TO ENTER

Players must pre-register to play. For quick and easy online registration go to www.chess4life.com and click on "Tournaments" No on-site entries accepted. Entry fee is \$10. Mailed entries must include your entry fee and be received no later than Tuesday, Jan 6th. Limited to the first 300 received. All players must check-in the morning of the tourney between 8:30 and 9:00AM. Make check to Theresa Tromp Chess Trust; mail entries to: Theresa Tromp Chess Tournament, PO Box 705, Lynden, WA 98264. Include the following: students full name, address, school, grade, email. *T-Shirt Option:* Include an extra \$10 for the WCSCC T-Shirt! Indicate youth or adult size desired: XS, S, M, L, XL.

DISCLAIMER

The district does not sponsor this event and the district assumes no responsibility for it. In consideration of the privilege to distribute materials, this district shall be held harmless from any cause of action filed in any court or administrative tribunal arising out of the distribution of these materials, including costs, attorney's fees and judgments or awards.

Distribution Authorized: _____ By Date _____

(cut here)

I want to play in the 2009 Whatcom County Scholastic Chess Championships Tournament! (\$10)

Lunch \$4 (pizza, pop, chips) pepperoni cheese T-Shirt \$10 _____

(Note: Advance entries must be mailed to address above.) (Or register online at www.chess4life.com!)

NAME _____

ADDRESS _____

CITY, STATE, ZIP _____

PHONE _____ GRADE _____ SCHOOL _____

Email _____